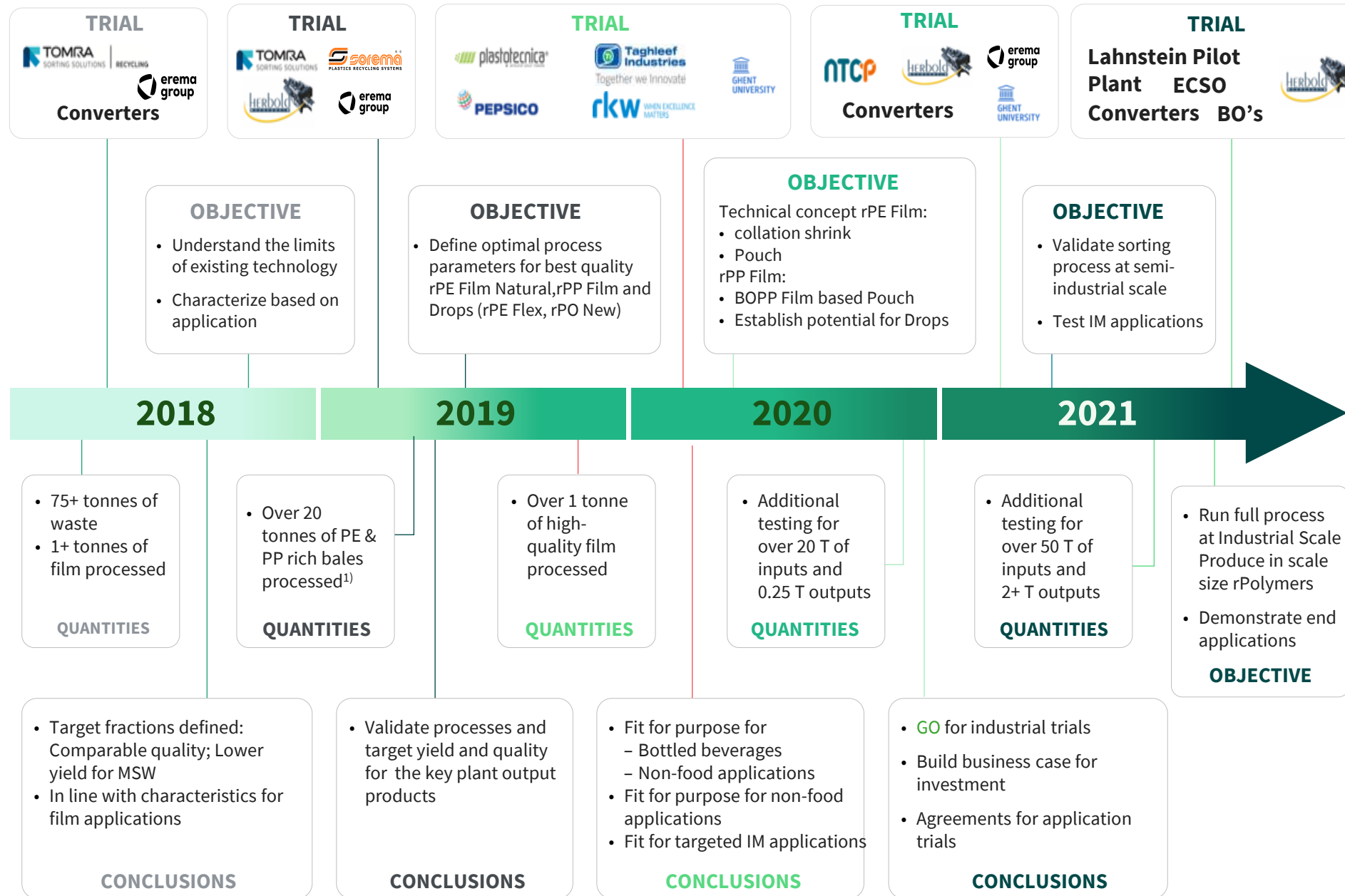


Technical concept development and trials finalized



1) DSD German Standard – 10 tonnes of 310-1 and 10 tonnes of 323-2 (i.e., same bale consistency used in the business case simulation)

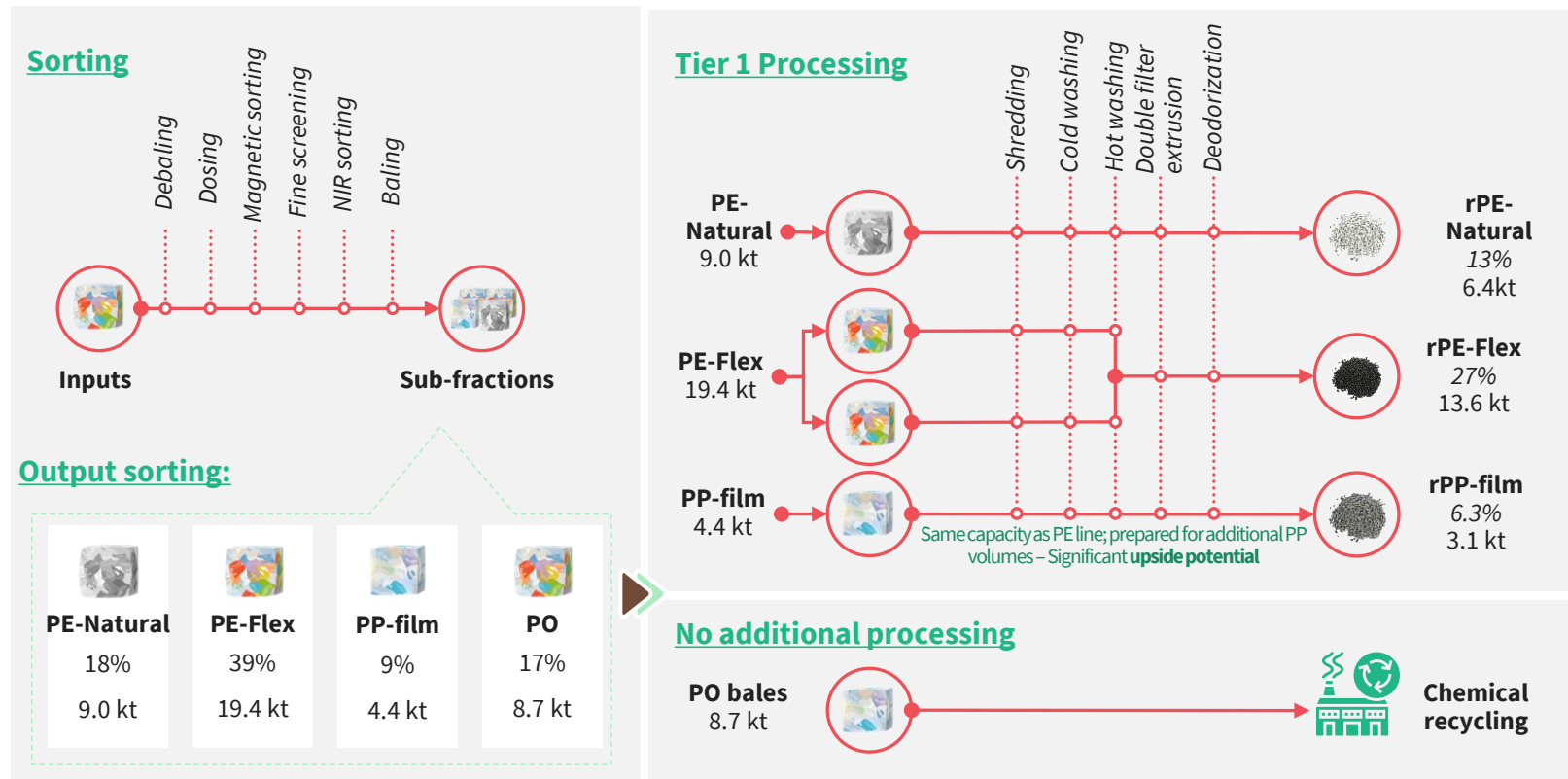
Mass balance, yields, and updated plant layout

The updated design has 4 Tier 1 lines (1 for PE nat., 2 for PE flex & 1 for PP film)
– PO bales are sent to Chemical recycling without additional processing

ValueFlex process overview

1 Feedstock 2 ValueFlex processing

- Post –consumer/ household flexibles plastic bales (PE & PP rich)
- Today not processed in majority of EU countries (i.e., free inputs or even with subsidies)¹⁾
- Feedstock mix based on latest CEFLEX compositional analysis in NL



3 Output

- Recycled PE & PP film (>90% of revenues) for packaging and non-packaging applications (e.g. bags) – Upside potential from PP rich input streams (i.e., +50% & +100% PP scenarios)
- Key clients are plastic convertors/ packaging producers
- Sorted (unwashed) PO bales are sent to chemical recycling as feedstock

1) "Gate fees" possibly received from collectors and/ or PROs to take the waste, instead of paying incineration fees or taxes (simulated as upside)

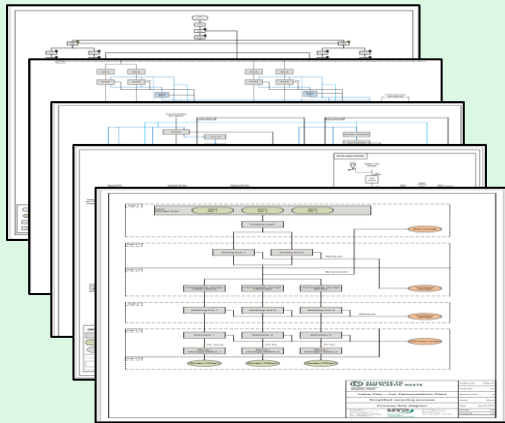
Complementary technical package

The complementary technical package developed by HTP contains PFDs, plant and process description, design guidelines, input scenarios, mass flows and drawings

Overview of complementary technical package contents developed by HTP

Process flow diagrams

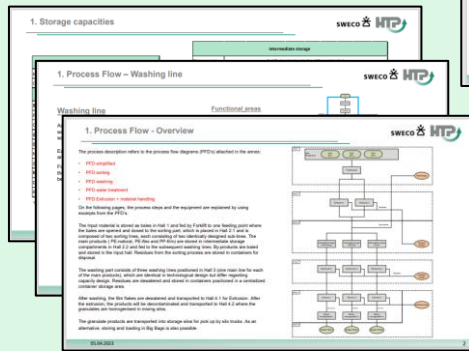
1



- Overview of the full recycling process
- Detailed view for:
 - Sorting line
 - Washing line
 - Water treatment
 - Extrusion

Plant & Process description

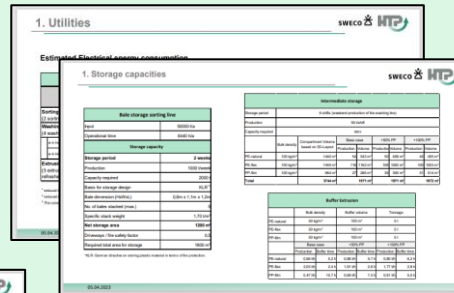
2



- Process description:
 - sorting line
 - washing line
- Plant Machine equipment

Design guidelines

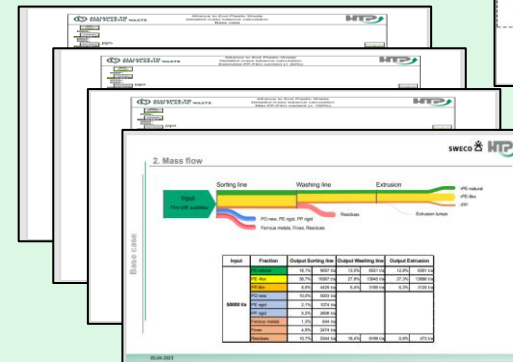
3



- Design guidelines
- OPEX indices – additional information

Input scenarios and mass flows

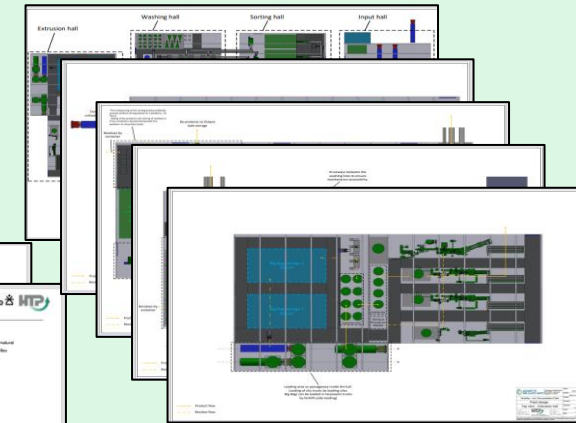
4



- Input scenarios and mass flow
- Mass balance sorting line:
 - Base case
 - +50% pp
 - +100% pp

Drawings

5



- Layout plant design for:
 - Full site
 - Input hall
 - Sorting hall
 - Washing hall
 - Extrusion hall